



ST PAUL'S LUTHERAN PRIMARY

WINTER CARNIVAL

NEWSLETTER



CASHLESS EVENT



ALCOHOL FREE

ST PAUL'S LUTHERAN PRIMARY WINTER CARNIVAL NEWSLETTER

Welcome to the first edition of our Carnival Newsletter!

We're excited to launch our very first Carnival Newsletter as we prepare for a special day of fun, laughter, and celebration! This year's carnival is extra special as we mark 40 years of St Paul's—what better way to celebrate than with a joyful event for the whole family to enjoy? We can't wait to bring our community together for a day filled with entertainment, food, and plenty of fun!

IMPORTANT EVENT TIMES

12:00PM	CARNIVAL OPENS
12:00PM-4:00PM	SHOP@ ST PAUL'S CLASS & SPECIALIST STALLS
12:00PM-6:00PM	MARKET STALLS OPEN
12:00PM-1:00PM	ENTERTAINMENT FROM SCHOOL AND COLLEGE ON MAIN STAGE
1:00PM-5:00PM	RIDES OPEN
1:00PM-5:00PM	SUPPORT OUR TALENTED PAST STUDENTS AS THEY TAKE TO THE MAIN STAGE!
5:00PM-6:00PM	GET READY TO GROOVE AS OUR STAFF BAND BRINGS THE ENERGY WITH SOME CLASSIC 80S HITS! JOIN THE FUN, SING ALONG, AND SOAK UP THE GOOD VIBES AS WE LEAD INTO THE GRAND FINALE—THE FIREWORKS SPECTACULAR!
6:00PM	FIREWORKS
6:05PM	OUR 40TH ANNIVERSARY WINTER CARNIVAL CONCLUDES

ST PAUL'S LUTHERAN PRIMARY

WINTER CARNIVAL NEWSLETTER

WINTER CARNIVAL RIDES

4 YEARS AND UNDER RIDE ARM BAND

\$20 presale or \$25 on day



PETTING ZOO



SUPER SLIDE*

100cm to ride alone.

*80-100cm may ride when accompanied by an adult.



DODGEM CARS*

120cm to drive a Dodgegem Car.

*Children 90-120cm can ride as a passenger, with an adult driving.



CUP AND SAUCER*

100cm to ride alone.

*80-100cm may ride when accompanied by adult.

ALL AGES (5 YEARS +) RIDES ALSO INCLUDES:

\$45 presale or \$50 on day



LASER TAG

At least 6 years old.

Participants under 18 require guardian or parent consent.



STORM

Must be 120cm to ride - no exceptions.



WIPEOUT

From ages 6 to 16.



INFLATABLE OBSTACLE COURSE

From 5 years of age.

*Unlimited rides with
armband between 1:00 and
5:00pm.*

**SCAN THE QR CODE OR CLICK THE
LINK TO PURCHASE**

If you're hopping on a ride to accompany your child, you'll need an armband too.
Only accompanying a little one on the Under 4 rides and not joining in on the other rides? Then the Under 4 rides armband is perfect for you!



ST PAUL'S LUTHERAN PRIMARY WINTER CARNIVAL NEWSLETTER

SHOP@ST PAUL'S

Our very first Shop@St Paul's is almost here! Each grade and specialist subject area has been busy designing and creating unique market products to sell—bringing learning to life through creativity and entrepreneurial thinking. This exciting initiative is part of our current inquiry units and gives students a hands-on opportunity to explore business skills, teamwork, and innovation. We can't wait for you to see (and shop!) what they've made. Below are some cryptic clues!

All profits made from Shop@ St Paul's will go towards *Save the Children* as our Service Learning Fundraiser.

Three in a row
and Tiny
treasures to
thread, sort, or
style...

Say it your way,
the handmade
way...

Strike it lucky in
the gold fields...

Hold your place in
style...

Words that hit,
rhythm that
sticks... and piece
by piece, a story
unfolds...

Snapshots,
stories, and
souvenirs from
the past...

Small but mighty
strummers...

A taste of
tradition, a touch
of today

Catch, bounce,
and conquer...

Count the days,
cherish the
moments...

New life for old
things...

Mini Beasts...

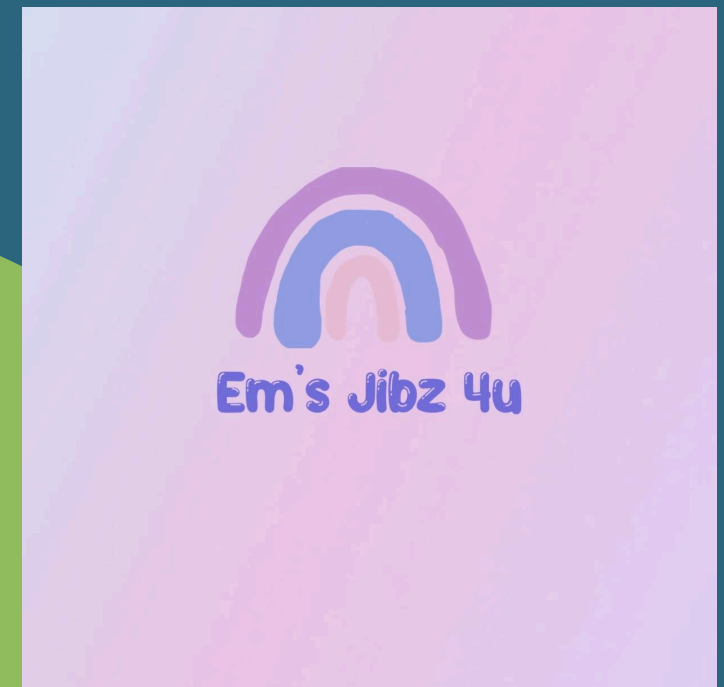


*Come and support our
young entrepreneurs from
12:00pm-4:00pm!*

ST PAUL'S LUTHERAN PRIMARY WINTER CARNIVAL NEWSLETTER

COMMUNITY MARKET STALLS

Get ready to meet our clever market stall holders — a fantastic crew full of creativity and talent! They've been busy crafting beautiful handmade treasures just for you. Whether you're looking for something unique to brighten your home or a special one-of-a-kind gift, our stallholders will bring plenty of charm, colour, and inspiration to the market!



Markets open from 12:00pm-6:00pm!

ST PAUL'S LUTHERAN PRIMARY WINTER CARNIVAL NEWSLETTER

EAT STREET - FOOD VENDORS



Dutch Pancakes

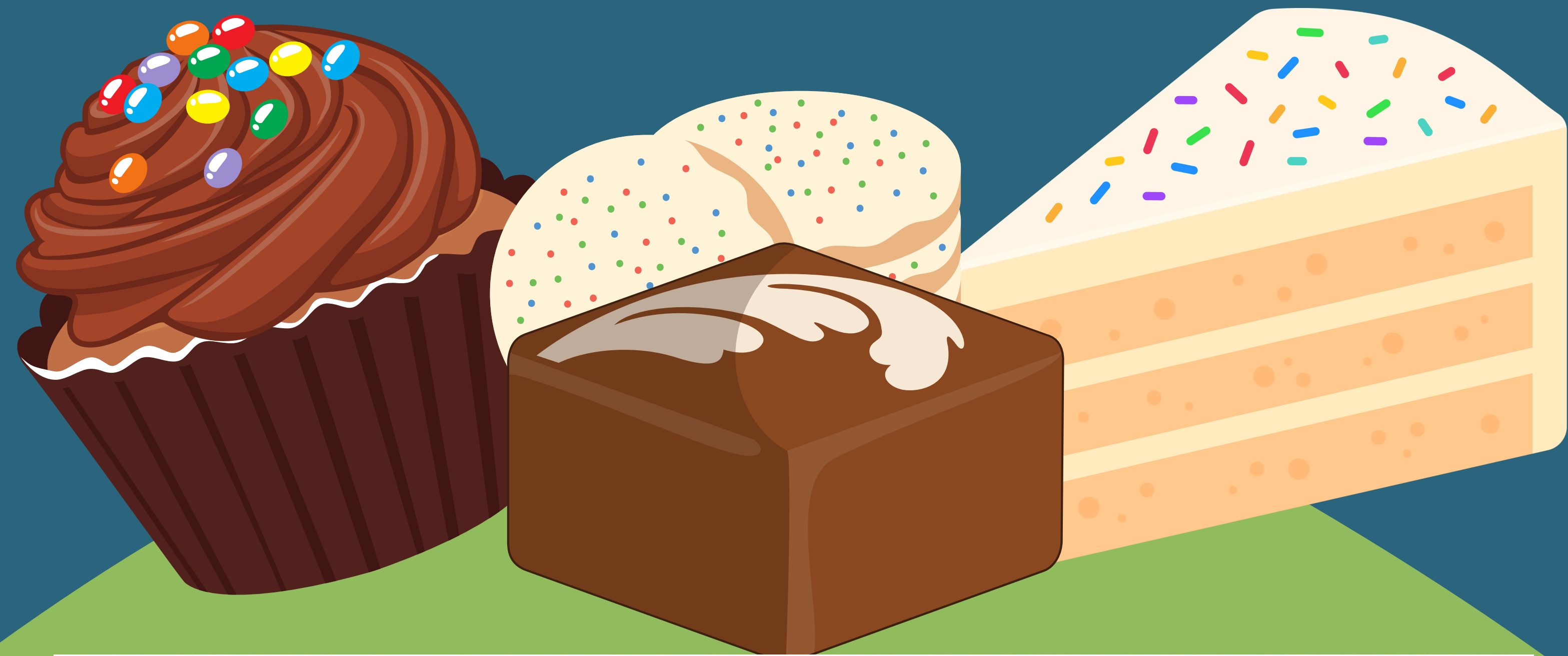


BBQ Sausage Sizzle & Hamburgers

Dine in comfort as we transform our basketball court into a vibrant outdoor eating precinct!

ST PAUL'S LUTHERAN PRIMARY WINTER CARNIVAL NEWSLETTER

BAKE SALE



We're inviting families to whip up some homemade goodies—like cakes, cupcakes, cookies, slices, or muffins—to help make this the best bake sale yet at our Winter Carnival!

How you can help:

- ✓ Bake something sweet to donate.
- ✓ Pick up some labels up from reception to write your ingredients on
- ✓ Drop off your baked goods on Friday 18 July at reception!
- ✓ Join the packaging party if you can (RSVP by Monday 14th July), in the GLAD Centre on Friday 18 July at 9:00am where our volunteers will help pack, stick labels and price the baked good ready for Saturday!

Thank you for sharing your time, talent, and treats!

[Register your interest here!](#)

ST PAUL'S LUTHERAN PRIMARY

WINTER CARNIVAL NEWSLETTER

MAIN STAGE MAGIC FROM 12:00PM!

**PERFORMANCES FROM
ST PAUL'S GROUPS,
GRACE COLLEGE AND
STAFF BAND! KEEP AN
EYE CLOSER TO THE DATE
FOR THE PROGRAM**



**CALLING ALL ALUMNI! SHOWCASE YOUR
TALENT ON THE BIG STAGE**



**SCAN THE QR CODE OR CLICK THIS LINK
TO REGISTER YOUR INTEREST!**

ST PAUL'S LUTHERAN PRIMARY WINTER CARNIVAL NEWSLETTER

SHOW BAGS

Packed with fun surprises and sweet delights, our showbags are a must-have for carnival day. Preorder now to secure yours—or pick one up at the stall on show day! A range of options available, including confectionery-filled bags sure to satisfy every sweet tooth.



\$25 PRESALE
\$30 ON THE DAY



**PLUS, A DELICIOUS RANGE OF SWEET
SHOWBAGS WILL BE AVAILABLE FOR PURCHASE
ON CARNIVAL DAY!**

**CLICK THE [LINK](#) TO PURCHASE PRESALE SHOWBAGS
(TO CLOSE SUNDAY 22 JUNE AT 5:00PM)**

ST PAUL'S LUTHERAN PRIMARY WINTER CARNIVAL NEWSLETTER

FIREWORKS SPECTACULAR – THANKS TO GRACE LUTHERAN COLLEGE!

We're thrilled to announce that this year's Winter Carnival will finish with a dazzling fireworks display presented by the incredible team at All Fired Up Fireworks! Get ready for a sky full of colour, sparkle, and excitement as we celebrate in style.

A huge thank you to Grace Lutheran College for proudly sponsoring this spectacular display — your generous support helps make magical moments like this possible for our community!

Don't miss the grand finale at 6:00pm!



**GRACE
LUTHERAN
COLLEGE**
EST. 1978

ST PAUL'S LUTHERAN PRIMARY

WINTER CARNIVAL NEWSLETTER

A HUGE THANK YOU TO OUR SPONSORS!

We are incredibly grateful to the generous sponsors who are supporting this year's carnival. Their contributions help us create a fun, memorable event for our school community, and we couldn't do it without them! Be sure to check out and support the amazing local businesses who are helping make the day a great success.

Diamond Plus Sponsor:



Finance
with a
mission

Fireworks Sponsor:



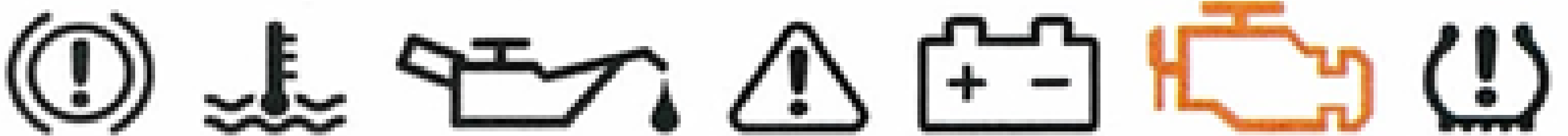
GRACE
LUTHERAN
COLLEGE
EST. 1978

ST PAUL'S LUTHERAN PRIMARY

WINTER CARNIVAL NEWSLETTER

A HUGE THANK YOU TO OUR SPONSORS!

Silver Sponsors:



ABSOLUTE MECHANICAL

For all your mechanical needs



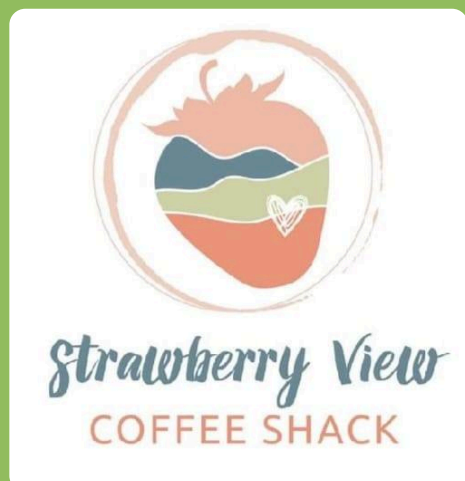
ST PAUL'S LUTHERAN PRIMARY WINTER CARNIVAL NEWSLETTER

A HUGE THANK YOU TO OUR SPONSORS!

Bronze Sponsors:



With donations from:



We're excited to have Planet Fitness Caboolture joining us at the carnival! They'll be bringing the energy with a rowing competition for adults—test your strength and endurance for a bit of friendly fitness fun. There'll also be games and giveaways for the kids, so be sure to stop by their stall and get involved!

ST PAUL'S LUTHERAN PRIMARY WINTER CARNIVAL NEWSLETTER

HOW YOU CAN GET INVOLVED!



Join in on the bake sale!
RSVP [here](#) by Monday 14th July



Donate soft drink cans for the BBQ
Reception open 10:00am-2:00pm over the holidays



Share the event with your friends and family!
Follow our Facebook/Instagram for easy to share posts!



Stay Tuned!

More details, sneak peeks, and
schedules will be coming your
way in the next edition. We
can't wait to celebrate with you
all!

