

## Year 6 Canberra Adventures

Our Year 6 students have returned from an unforgettable week in Canberra, where they explored some of Australia's most important cultural, historical and political landmarks. The trip was an exciting blend of hands-on learning, real-world experiences and memorable moments that brought their Civics and Citizenship studies to life. During the week, students visited Parliament House, where they walked through the chambers, learned how laws are made and gained a deeper understanding of how Australia's government works. They also explored the Royal Australian Mint and watched coins being produced, discovering the fascinating process behind Australian currency.

A visit to the Australian Institute of Sport offered a behind-the-scenes look at the life of elite athletes, with students enjoying the interactive Sportex exhibits and testing their own skills. At Questacon, there was plenty of excitement as students engaged with science experiments, robotics displays, and the ever-popular Freefall slide. The learning continued at Geoscience Australia, where students were amazed by geological displays, earthquake simulations and maps that showed how our world has changed over time. Their tour of Government House provided insight into the important role of the Governor-General and allowed students to see the historic residence up close.

One of the most meaningful stops of the trip was the Australian War Memorial. Students explored the galleries, reflected on Australia's wartime history and took part in a quiet moment of remembrance to honour those who served. They also spent time at the National Portrait Gallery, viewing artworks from across Australia and were able to produce some of their own.

At the National Electoral Education Centre, students took part in a mock election, giving them practical experience with Australia's voting process and reinforcing the importance of participating in democracy.

The Australian Government recognises the importance of all young Australians visiting the national capital as part of their Civics and Citizenship education. To assist families with the cost of the excursion, the government provided funding of \$90 per student through the Parliament and Civics Education Rebate program. This rebate is paid directly to the school upon completion of the excursion.

The Canberra trip is always a highlight of Year 6, and this year's group shone with their enthusiasm, respect and curiosity. They embraced every opportunity, supported one another and represented our school proudly. We extend our heartfelt thanks to the staff who supported the trip and helped create such a safe, enriching and memorable experience.

What an inspiring way to begin their final year of primary school!

# Year 6 Canberra



# Year 6 Canberra





# From the Principal - Mrs Valencia

## Together in Partnership

Strong partnerships between school and home are one of the greatest gifts we can offer our children. When families and teachers work together with shared purpose, children feel secure, supported, and confident in their learning journey.

At school, students develop academic skills, social understanding, resilience, and independence. At home, these lessons are reinforced through encouragement, guidance, and love. When communication between parents and teachers is open and consistent, children experience a powerful message: the important adults in my life are united in helping me grow. Research consistently shows that children achieve more—academically, socially, and emotionally—when families are actively engaged in their education. Simple actions such as reading together, discussing school experiences, supporting homework routines, attending school events, and praying for your child's growth all contribute to long-term success.

At St Paul's, we believe education is not only about knowledge but also about nurturing character and faith. School and family together help shape children who are compassionate, responsible, and grounded in Christ. The Bible reminds us of the central role of family in guiding young hearts: *"Start children off on the way they should go, and even when they are old they will not turn from it."* – Book of Proverbs 22:6

Parents are a child's first teachers, and teachers are partners in that calling. As educator Brad Henry wisely said, "A good teacher can inspire hope, ignite the imagination, and instill a love of learning." When parents and teachers join together with faith and purpose, that inspiration multiplies.

Let us continue to build strong, respectful partnerships rooted in trust, prayer, and shared commitment. Together, as families and school, we can nurture each child to flourish academically, socially, and spiritually, becoming the person God has created them to be.





# From the Principal - Mrs Valencia

## *Blue Cards and Parent Volunteers*

Over the next year, Queensland's Blue Card system will continue to evolve, with several changes already beginning to roll out across 2025–2026. These updates are part of a statewide effort to strengthen child-safeguarding measures and ensure greater consistency across all child-related organisations.

One of the key changes taking effect is the introduction of new categories of child-related work, expanded screening requirements, and new rules around when parent volunteers may or may not need a Blue Card. These changes have been phased in across schools, community groups and organisations from 1 July 2025 onward.

From 20 September 2025, some parent volunteers will still be exempt, but in many cases - particularly where volunteering involves children other than their own, camps, overnight activities, or close personal contact - a Blue Card will be required.

Because of these shifts, we expect that more school-based volunteering roles may require a valid Volunteer Blue Card in the future. To ensure we stay ahead of these evolving requirements and avoid delays later, we would like to encourage parents and carers who are interested in volunteering to apply now.

### **Why We Are Encouraging Parents to Apply Early**

While not all volunteer positions require a Blue Card at this moment, upcoming changes are expected to broaden the categories that do. Applying early helps ensure that:

- Our school remains aligned with the strengthened safeguards for children being rolled out across Queensland
- We uphold the safest and most consistent processes for all activities involving children
- You are ready to volunteer at any time during the year
- Last-minute compliance delays don't prevent you from helping at events

### **How to apply for a Blue Card**

Head to the Blue Card [website](#) for steps on how to apply for your volunteer blue card.

### **A Stronger, Safer Approach for Our Students**

We are committed to ensuring that every child in our care is safe, supported, and protected. As Queensland strengthens its Blue Card system - expanding screening categories and clarifying volunteer requirements, we want to ensure our school community stays well-prepared. Encouraging families to obtain a Volunteer Blue Card now helps us continue offering rich, engaging opportunities where parents can be fully involved in school life - excursions, classroom help, sports days, camps, and special events, without administrative delays later on.

If you are interested in volunteering this year, we warmly invite you to start the process. Your time, support, and involvement make a huge difference to our school community. If you need help applying, our office staff are more than happy to assist.





# From the Deputy Principal (Operations) - Mr Keane

At St Paul's Lutheran Primary School, we are committed to nurturing not only strong academic outcomes, but also the social and emotional growth of every child. A key approach we use to support this is restorative practice. I would like to share what this means, how it looks in our primary setting, and why it plays such an important role in our school community.

Restorative practice is a relationship-focused approach to behaviour and wellbeing. Rather than concentrating solely on rules and consequences, it encourages children to understand the impact of their actions, take responsibility, and actively work to repair any harm caused. When challenges arise, the focus shifts from "Who is in trouble?" to questions such as: What happened? Who has been affected? How can we make things right? These guided conversations help children feel heard and supported while also being accountable for their choices.

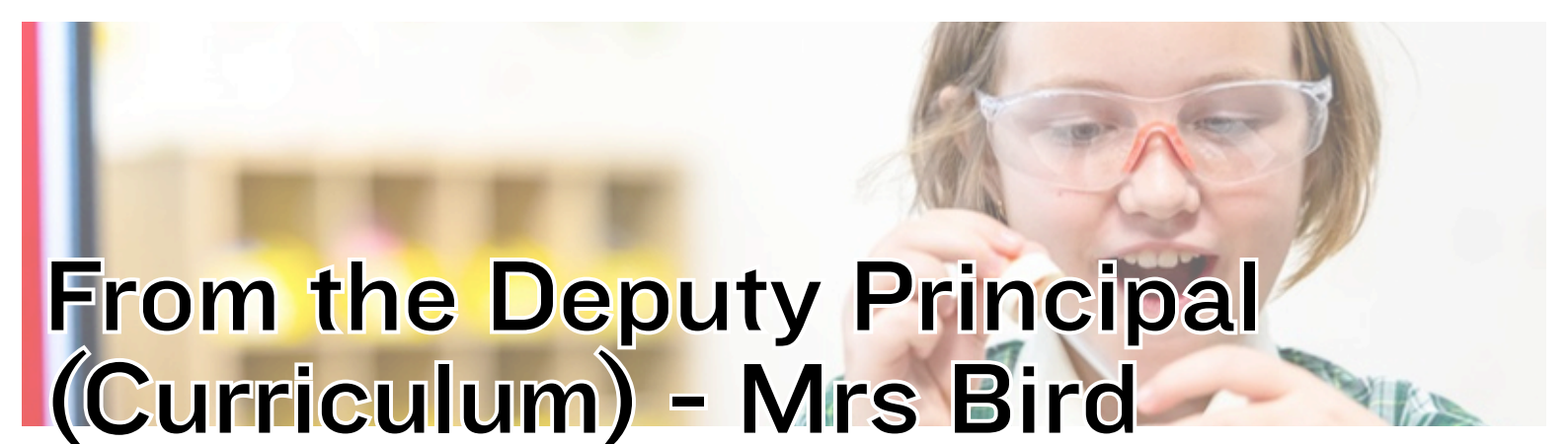
In a primary school setting, restorative practice is both proactive and responsive. Our teachers intentionally build positive classroom communities through regular discussions, shared expectations and opportunities for every child to have a voice. When conflict occurs in the classroom or playground, students are supported to calmly talk through the situation, listen to one another's perspectives, and agree on a constructive way forward. This may involve an apology, a commitment to making a different choice next time, or another meaningful action that restores the relationship. The aim is not to remove consequences, but to ensure that learning and growth sit at the centre of the process.

We use restorative practice because primary school is a critical time for children to develop empathy, resilience and problem-solving skills. Mistakes are a natural part of growing up. By treating these moments as opportunities for reflection rather than simply punishment, we help students build lifelong skills in communication and responsibility. When children understand how their behaviour affects others and feel supported to repair harm, they are more likely to make positive choices in the future and maintain their sense of belonging within the school community.

Over time, restorative approaches strengthen trust between students and staff, improve emotional regulation, and contribute to a culture where every child feels valued and safe. When students feel connected and respected, they are more confident learners and more willing to contribute positively to their classroom environment.

You can support this approach at home by encouraging reflective conversations when difficulties arise. Asking your child what happened, how others might have felt, and what they could do to make things right reinforces the language and skills we are teaching at school. When home and school work together in this way, children benefit from consistency and clarity.

Thank you for your continued partnership in supporting your child's development. Together, we are fostering a caring, respectful and resilient community at St Paul's Lutheran Primary School where every child can learn, grow and thrive.



# From the Deputy Principal (Curriculum) - Mrs Bird

## *Growing Curious Minds Through Inquiry Learning*

This year, our classrooms are alive with curiosity and creativity as we launch our newly developed Inquiry Learning units. After six months of planning, collaboration, brainstorming, and ideation throughout last year, teachers from Prep to Year 6 have created engaging units that align with the newest version of the Australian Curriculum and reflect our identity as a Lutheran school. These units are designed to challenge students, connect learning across subject areas, and nurture the skills they will need for their future.

Inquiry Learning begins with big ideas and meaningful questions. Instead of simply memorising facts, students explore real-world issues - asking questions, investigating, analysing information, and communicating their findings. This approach integrates learning across the curriculum, including Science, HASS, and Technologies, while intentionally developing the General Capabilities such as critical and creative thinking, ethical understanding, ICT capability, collaboration, and communication.

Our new units help students make deeper connections to concepts such as our environment, community, democracy, and stewardship of God's creation. Whether students are designing digital solutions, exploring scientific phenomena, mapping local places, investigating community histories, or planning ways to care for our environment, they are engaged in rich learning that builds confidence, independence, and responsibility.

Across the school, students are becoming scientists, researchers, historians, designers, problem-solvers, and active citizens. They participate in hands-on investigations, create prototypes, analyse data, interview community members, and work together to explore complex ideas in age-appropriate ways. Each unit includes authentic tasks, and opportunities for students to reflect, revise, and deepen their thinking.

As a Lutheran school, we believe every child is known and loved by God. Inquiry Learning honours this by recognising students as capable, curious learners who can make a positive difference. Our units highlight compassion, inclusion, service, and respect - qualities we hope will shape them as lifelong learners and thoughtful citizens who contribute meaningfully to God's world.

We look forward to sharing the exciting learning taking place throughout the year and celebrating the growth, wonder, and discovery happening in every classroom.





# Arts@St Paul's

## **Instrumental Program Growth**

We are excited to share that our instrumental timetable for piano, guitar, drums and strings is now completely full. What a fantastic milestone! Due to this growth, we have begun a waiting list for students who are eager to join in the future. It is encouraging to see such strong interest in developing musical skills here at St Paul's.

## **Tuesday Morning Ensemble**

Our Ensemble has gotten off to a great start, with guitarists, violinists, cellists, percussionists and keyboardists coming together each Tuesday morning. Students are learning the valuable skills of listening, blending, and playing as a team — and it has been wonderful to hear the sound of collaborative music-making filling the room.

## **Senior Choir – A Record Year!**

We have a record-breaking 30 members in Senior Choir this term! These dedicated students are gathering early each Thursday morning to quite literally “make a joyful noise.” Their commitment and energy have been noteworthy, and we are looking forward to sharing their voices at upcoming events.

## **Junior Voices**

Our Junior Voices are also preparing enthusiastically for their first performance at the end of the term. We are ready to go and can't wait to see them shine!

## **Year 3 Strings Immersion**

Year 3 students have enjoyed sampling the three string options as part of the Strings Immersion Program. From Week 7, students will begin working in their allocated instrument groups, and we are excited to see their skills develop throughout the year.

## **Dance Troupe**

Our newly formed Dance Troupe has been dancing up a storm on Wednesdays at First Break. The energy, teamwork and creativity on display have been fantastic, and we look forward to seeing their progress across the term.

## **Kids Rock Band – Auditions Coming Soon!**

Auditions for Kids Rock Band are just around the corner. We are looking for confident guitarists, drummers, percussionists, bass players and keyboardists who can learn and perform 3- and 4-chord rock songs alongside other keen musicians.

If your child in Years 4 to 6 is already learning an instrument and would love the opportunity to jam with others, nomination forms are available now and should be returned to Mrs Kirby by the end of Week 6.

Please note: vocalists must be members of Senior Choir in order to audition.

It has been a wonderful and energetic start to the year in the Arts at St Paul's! Our program continues to grow, and it is such a joy to see so many students embracing music and dance with enthusiasm and commitment.

Got questions? Email: [performingarts@stpaulslps.qld.edu.au](mailto:performingarts@stpaulslps.qld.edu.au)





# Sport@St Paul's

## *Persistence, Resilience & Sweat*

Cross Country training is off to a strong start. I'm impressed by such hard working young people who just keep going! Our training is focused on running at your pace and we welcome competitive and Fun runners.

Term 1 is filled with try outs for 8 sports to represent St Paul's at the Caboolture District Trials. So far this term we have been able to send 5 St Paul's students and 2 students were asked to return on a second day for selectors to have a closer look.

The St Paul's Cross Country Carnival (Thursday 26 March) is not far away. Keep your eyes peeled for further details coming your way!

Got a question or an action shot you would like to share? please email [hpeteacher@stpaulslps.qld.edu.au](mailto:hpeteacher@stpaulslps.qld.edu.au)




### CROSS COUNTRY RUNNING TRAINING 2026

**WEDNESDAYS & FRIDAY MORNINGS  
7.15 - 8AM**

**GRADES 3-6**

PARENT PERMISSION NEEDED -  
PARENT LOUNGE  
MEET GLAD CENTRE

CROSS COUNTRY CARNIVAL  
FRIDAY MARCH 27  
2026  
KINDY - YEAR 6



## WALKING GROUP

While the kids are working hard at Running Training, enjoy the grounds of St Paul's, have a chat and boost your steps for the day!  
When: Wednesday's and Friday's, 7.15am-8am





# From the Library (GLAD Centre)

*Thank you!*

## Class Borrowing Days

- Prep: Friday
- Year 1: Friday
- Year 2: Tuesday
- Year 3: Thursday
- Year 4: Wednesday
- Year 5: Monday
- Year 6: Friday



What an amazing response to our first Book Club of the year!

I was blown away by the amount of orders that we received.

Your generosity has helped us to acquire approximately \$450 in new resources for the library. This includes both fiction, non-fiction and graphic novels, as well as a few pieces for our teachers to use in classrooms. It was also exciting to see students walking out keen to read about their purchases.

## Important Dates

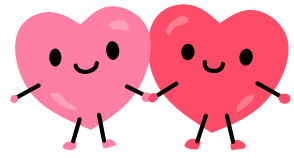
### March

- 2nd-6th March: Dr Seuss' Birthday Week
- 13th: **Book Club Issue 2** Orders Due
- 17th: St Patrick's Day



## Library Lover's Week

Queensland Schools Library Week was so much fun, with many students taking the plunge and borrowing a "Blind Date with a Book". Students enjoyed finding something new and different to read.





# From our Chappy

## *Beyblades Needed!*

If you have any unused Beyblades, launchers, or stadiums that you'd be happy to donate to our Beyblade Club, we would greatly appreciate your support. Donations can be dropped off at reception.

Thank you for helping us make this club fun and accessible for everyone!



## *Did you know?*

The bible tells us in Ecclesiastes 4:12 "...A cord of three strands is not quickly broken."

This powerful image shows that we are stronger when we stand together rather than alone. Togetherness provides support in times of struggle, encouragement in moments of doubt, and shared joy in seasons of celebration. When we walk in unity with one another—and with God at the centre—we reflect His design for community: resilient, connected, and strengthened by love.





## From our P&F

### *P&F Annual General Meeting - Tuesday 10 March*

Our P&F Annual General Meeting will be held on **Tuesday 10th March at 3:15pm.**

We warmly invite all parents and carers to attend. The AGM is a wonderful opportunity to hear about what the P&F has achieved, learn what's planned for the year ahead, and see how you can be involved in supporting our school community.

We would love to see some new faces there - everyone is welcome

### *Hot Cross Bun Day - Monday 30 March*

Hot Cross Bun Day is coming up on Monday 30th March!

Full details, including ordering information, will be sent out at the end of Week 6, so please keep an eye out for that communication.

We look forward to bringing this delicious Easter treat to our students and staff once again!

### *Breakfast Club - Thankyou*

A heartfelt thank you to our incredible volunteers who give their time each week to help run Breakfast Club. Your consistency and care make such a difference to our students.

We would also like to thank the generous families who have donated bread-your support helps ensure we can continue providing this important service to our school community.

We truly appreciate everyone who contributes in big and small ways.



[pfpresident@stpaulslps.qld.edu.au](mailto:pfpresident@stpaulslps.qld.edu.au)





# From the Church

## St Paul's Family Service

This past Sunday we held our first St Paul's Family Service for the year. It was a special service where we gathered around our school and church theme for the year: "Together... Bound in Love" (Colossians 3:14). It was a joyful reminder that we don't just live and learn alongside one another, but that we belong to one another because we first belong to God.

From the moment we walked into church, there was a real sense of warmth and connection. We were reminded that God's love is what holds us together, no matter where we might be, in our classrooms, on the playground, in our families, and in our church.

Our Year 4 students did a wonderful job leading the service. They sang My Lighthouse with confidence and energy, reminding us that God guides us through life's storms and carries us safely to shore. They also shared the Bible readings, including the Ten Commandments and Jesus' command to "love one another." Hearing these powerful words spoken by our students made the message even more meaningful.

In the message, I spoke about how love is more than just a feeling, it's something that we choose to do and that we practise. I explained how the Ten Commandments aren't just rules, but they are God's way of helping us live well together. They teach us to honour, to forgive, to speak kindly, and to look out for one another. When we do these things, we are "putting on love" in real and practical ways.

A big highlight of the service for all of us, was hearing the Year 4 students talk about what they've been learning in Christian Studies. Their thoughtful answers about love, rules, and why God gives us laws showed just how deeply they've been engaging with the topic. It was clear they understood that love builds strong, safe communities.

I am so proud of the Year 4 class for the way they led with enthusiasm and heart. A big thank you to all the parents who came, it was truly wonderful to have you there. I am also incredibly grateful to Mrs Hughes and Mrs Twigge for their time, care, and preparation they put into making the service such a special experience for everyone involved.

As we continue through the year, may we keep choosing kindness, forgiveness, and encouragement — living out what it means to be truly together, bound in love.





# From the Church



## **Administration Assistant**

**St Paul's Lutheran Church, Caboolture  
9 hrs/week**

**St Paul's Lutheran Church, Caboolture is seeking a friendly and organised Administration Assistant. This part-time role involves providing administrative support, maintaining records, managing correspondence, and assisting with day-to-day operations of the church office.**

### **You will need:**

- Excellent communication and interpersonal skills**
- Strong organisational and time management abilities**
- Ability to use initiative to achieve tasks**
- Ability to think systematically and follow through office processes and procedures**

**If you are reliable, detail-oriented, and enjoy working in a supportive community environment, we'd love to hear from you!**

**For full Position Description please follow the link to our website.**

**For more information or to apply for the role, please send your resumé and a brief cover letter to [employment@stpaulscaboolture.org.au](mailto:employment@stpaulscaboolture.org.au)**

**Applications close Friday 13th March.**

**<http://stpaulscaboolture.org.au/blank-1/>**





# Upcoming Dates

## March

- 10 - P&F AGM, 3:15pm
- 11-23 - NAPLAN Year 3 and Year 5
- 20 - National Day of Action Against Bullying and Violence
- 23 - Year 4A PCYC Bike Ed
- 23 - Year 5 -6 Japanese Incursion
- 25 - Year 4B PCYC Bike Ed
- 27 - Cross Country Carnival
- 29 - Year 5 School Sunday, 9:00am
- 30 - P&F Hot Cross Bun Day
- 31 - Parent Teacher Interviews, 3:30pm

## April

- 1 - Last Day Term 1 - Free Dress Day
- 1 - Closing Chapel Service 8:45am
- 1 - Year 1 GLC Drama Excursion 11:20am
- 2 - Pupil Free Day
- 2 - Parent Teacher Interviews
- 3 - Good Friday
- 4 - Easter Saturday
- 5 - Easter Sunday
- 6 - Easter Monday
- 20 - Term 2 commences
- 24 - ANZAC Day School Service 8:45am
- 25 - ANZAC Day
- 28 - Japanese Bento Lunch



Images: Year 1 Inquiry Incursion - Push and Pull Forces.

